



EEW GROUP

LINE & PROCESS SAW PIPES

GOING FORWARD
to secure energy flow



Pipe Specialist for the transport of high demanding media



Line Pipes

With growing energy demands, EEWs high-quality SAW pipes have to withstand even more severe conditions. We offer standard and niche products with complex technical combinations of materials, dimensions and complementary services as well as product testing in projects with medium-sized total tonnages.

MATERIALS

Carbon steel incl. Sour service

High-strength carbon steel up to X120

Cladded steels

Stainless steels

Nickel alloy steels

Duplex, super duplex steels

To meet the growing energy demand of our time, the oil and gas industries are pushing into even more remote areas to unlock new resources. This includes, regions deep at sea, in the Arctic or highly-corrosive environments. But it is not only the upstream industry that is facing these new challenges. The downstream industry also has to develop new, effective concepts to be able to transport oil and gas under high pressure over long distances. EEW Group offers reliable and high-quality solutions for the Line and Process industry.



Process Pipes

EEW manufactures reliable pipe solutions for the oil, gas, chemical and power generating industries - in constructions with extreme conditions. Whether it is for the lowest or highest temperatures or extraordinarily pressures, our pipes are technically and qualitative highly developed to meet such demanding conditions.

NORMS

API / ASTM / EN / DNV / Others

OTHER SPECIAL SERVICES

NACE MR 0175 / ISO 15156, NACE TM 0284 (HIC)
NACE TM 0177 (SSCC)

CTOD / DWTT / Full Ring Test (OTI 95 635)

HIC / SSC acceptance criteria (e.g. G28/G48)



For decades, we've been a trusted partner in producing line and process pipes. Leveraging our expertise, we effectively execute major projects alongside our longstanding customers."

Hendrik Frank
General Manager Sales Line & Process Pipes



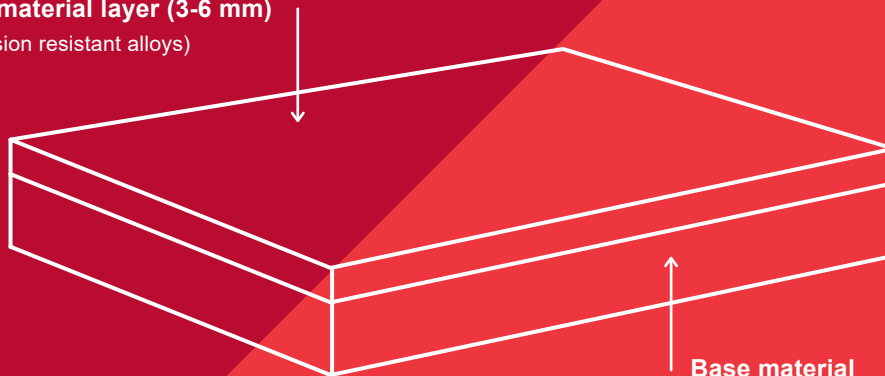
Learn more about our
Line & Process Pipes

CLAD Pipes

The production facility in the Group's headquarter in Erndtebrück, Germany, was expanded by a full-scale clad pipe production line. One of the investments is an in-house pickling facility enabling direct finishing of the clad pipes. In order to meet the highest requirements for the dimensional tolerances they are controlled already during production and finally measured and technically approved with state-of-the-art and high-precision laser systems.

- ∅ 14 - 96 inch Outer Diameter
- ▣ 0.375 - 2 inch min. Wall Thickness
- 📦 ~ 140,000 produced Tonnage 2017-2024

CRA material layer (3-6 mm)
(corrosion resistant alloys)



Base material
(high strength carbon steel)

MATERIALS

all API grades & CRA layer grades as per customer specification such as Alloy 625, Alloy 825, TP316L, etc.

all DNV grades & CRA layer grades as per customer specification such as Alloy 625, Alloy 825, TP316L, etc.

ASTM A671 / ASTM A672 & CRA layer grades as per customer specification such as Alloy 625, Alloy 825, TP316L, etc.

📄 Further material grades / dimensions and combinations can be offered based on request.

Nickel Alloy Steel Pipes



For cryogenic applications like LNG terminals, EEW produces SAW pipes made of nickel alloys and nickel based alloys (e.g. 3,5%, 9% or 36% Ni). With a state-of-the-art production line for 36-nickel pipes and specially trained personnel EEW has established itself as a specialist for cryogenic pipes. We also offer full solutions for the entire supply chain for such pipe-in-pipe systems, like coating, packaging, transportation and project management.

Applications for transport and storage of liquids at temperatures down to:

- 196 °C | N₂ liquefaction temperature
- 253 °C | H₂-liquefaction temperature
- 269 °C | He-liquefaction temperature

Projects & References

A few examples

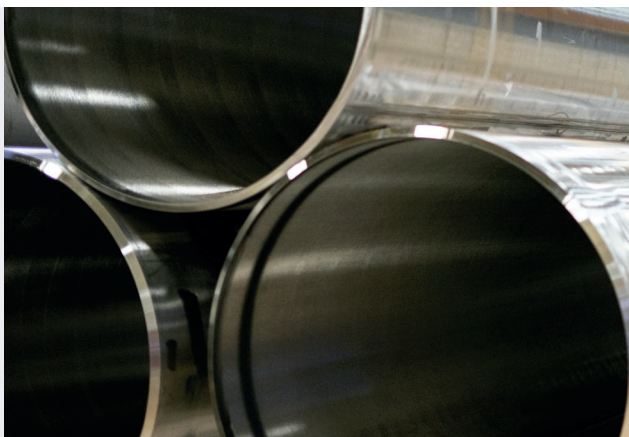
BARZAN PIPELINE

Year: 2017 - 2020
Customer: Saipem Italy, Qatargas
Country: Qatar
Material: L450 + UNS N06625
L450 + UNS N08825
Dimensions: O.D.: 609.6 - 812.8 mm
W.T.: 17.8 - 23.7 mm + 3 mm
Tonnage: > 75,000 t



LNG EXPORT FACILITY

Year: 2023
Customer: ITP
Country: USA
Material: FeNi36 (INVAR® M93)
Dimensions: O.D.: 610 - 914 mm
W.T.: 8 - 18 mm
Tonnage: 700 t



MARJAN & BERRI LINE & PROCESS PIPES

Year: 2014 - 2022
Customer: Saudi Aramco
Country: Saudi Arabia
Material: API 5L Gr. X65 MO / MS / M
API 5L Gr. X60 MS
Dimensions: O.D.: 406 - 1,524 mm
W.T.: 7.92 - 65.81 mm
Tonnage: 37,000 t



Check out EEW's success stories of our groupwide projects

Contact

info@eew-group.com
+49 2753 609 0
www.eew-group.com